



America's #1 exocad Educator is now proud partners of



Exocad Design Software

Clinical Print Package Flex Licence
Includes: Core, Articulator, Provisional, TruSmile, Tooth Lib., Smile Creator, Model Creator & Bite Splint.

VHF E5 MILL

Composites, zirconia, CoCr metals, and more, with no external air required and a compact design for chairside use.



iTero Lumina

Intraoral scanner with Multi-Direct Capture™ (MDC) technology delivers easy scanning and enhanced visualization.

EZ Ref Implant Location

Zirconia full-arch implant scanning system, autoclavability, and reusability for long-lasting value.

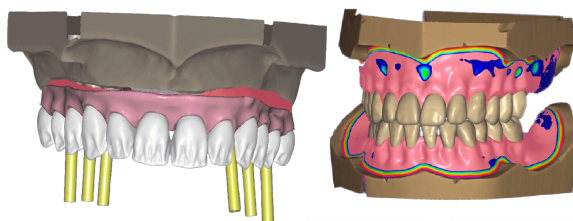


Alliedstar AS 200E

Laptop and Wireless intraoral scanner features a 2-hour battery life, 20-second full-arch scans and cloud storage.

Design Services

Send digital impressions to us, then allow us to curate the design. You manufacture on-site with the designed .STL file. 4 Speeds: 48 hours, 24 hours, 6 hours or chairside.



Crown
Ti Base & Crown
Abutment & Crown
Bridge

Bite Splint
Denture
Partial Denture
Surgical Guide

Full Arch All-on-X
Implant Bar
Veneer
Wax Up